
  
*Longthorne*  
ENGLAND  


# *An introduction to Longthorne Gunmakers*

Welcome to Longthorne Gunmakers, where tradition meets innovation and our impeccable engineering credentials are embodied in our 100% English-made shotguns.

We take pride in our commitment to custom-made quality products. Every component of our guns, barrels, actions, stocks and small parts is created in-house, in Lancashire, to exacting standards.

All steel parts are formed from solid billets of high specification steel; all stocks are crafted in our own workshops from Turkish walnut blanks. We don't import barrels, forging or stocks.

We're a family company with expertise spanning generations and encompassing various aspects of the industry.



## **James Longthorne Stewart**

My husband and Managing Director is an authority in the field of engineering and has been involved in the manufacture of complex precision components, including firearms componentry, for over 30 years.



## **Elaine Stewart**

As Co-Director, I have four decades' experience in technical marketing and buying.



## **Chloe Stewart**

Our daughter, an accomplished artist, is also an integral part of the company, designing and directing our engraving processes.



A respect for traditional skills and a passion for innovation defines us, influencing investment in our people and the finest state-of-the-art equipment. It's an approach that fuels our philosophy of combining long-established methods and modern technologies.

When we began developing our new English shotgun in 2006, our team agreed that our hallmark should be a range forged by this philosophy: innovative and advanced, while maintaining the classic lines and beauty of traditional shotguns.

Our pioneering Longthorne barrel is the centrepiece of a range of guns, which are strong, light and with negligible recoil.

Our signature gun, The Hesketh, was launched in 2010 and represented a milestone in our pursuit of the perfect shotgun. Over the coming pages, we invite you discover products that match English elegance with precision engineering to create a collection we're proud to call Longthorne.

*James Stewart*

# *Our commitment to Innovation*

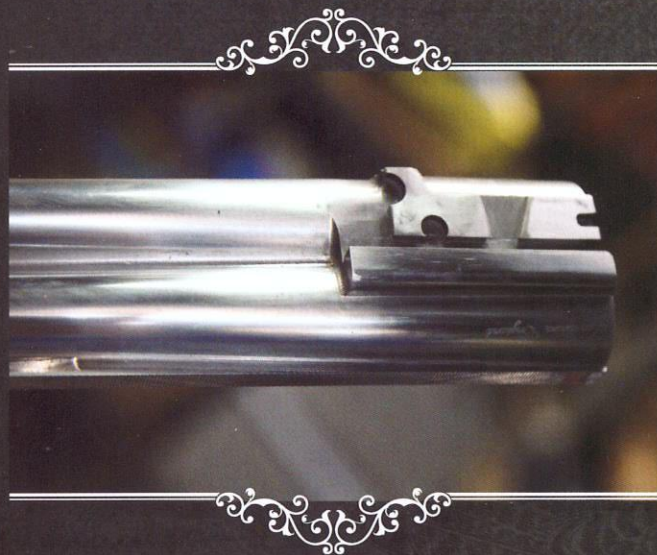
We draw on high specification modern materials and new technology to ensure our guns are in great shape to meet today's ammunition and performance demands.

We manufacture our barrels in-house using highly advanced methods and processes.

We take a single piece of high specification steel weighing approximately 59lbs/27 kg and machine the barrels from this until they weigh around 3lbs/1.3kg (depending on their length).

The resulting barrels are not only strong, but also light in weight.

In eliminating the need for a heavy soldered centre rib we are able to add weight to the barrel wall thickness, already stronger than the average barrel because of the superior material used.



Despite their light weight, our barrels are chambered for 3" and can be proofed for superior steel shot depending on choke size.

The small central i-beam between the barrels measures less than 2mm. This, combined with the fact that our barrels are honed to a very fine tolerance and are perfectly straight – not unlike a finely tuned rifle – results in our guns shooting exactly where they are pointed.

Most conventional barrels are constructed from two tubes 'pulled' together and then soldered, which in itself causes heat distortion. Effectively, this means these barrels are not perfectly straight and the 'shot' is being forced around a bend resulting in more 'felt recoil'.

The most significant feature of our guns is their negligible recoil, even with the heaviest loads. This is a consequence of barrel design, but also our low profile action made from a single piece of steel, which adds to the general rigidity of our guns. We often demonstrate the guns' capacity by using 50 gram 4s.

We are able to tailor the barrel length and the top rib to your requirements during the manufacturing process and can incorporate a rib more suited to game or clay shooting, to suit your preference.

We are also able to adjust the weight of our guns while maintaining balance.

Our barrels are hand finished and then we use a 'hot black' process to blacken them because there are no soldered ribs and therefore no chemical seepage, which can cause premature rusting of soldered joins.

This process is more resilient than the cold blacking process used on fabricated barrels and creates a wonderful blue/black sheen.

Our barrels are manufactured from a much harder material than conventional barrels, so they are far less likely to dent in the event of an accident. However, in the event of a mishap, dents can usually be raised without having to remove the ribs.

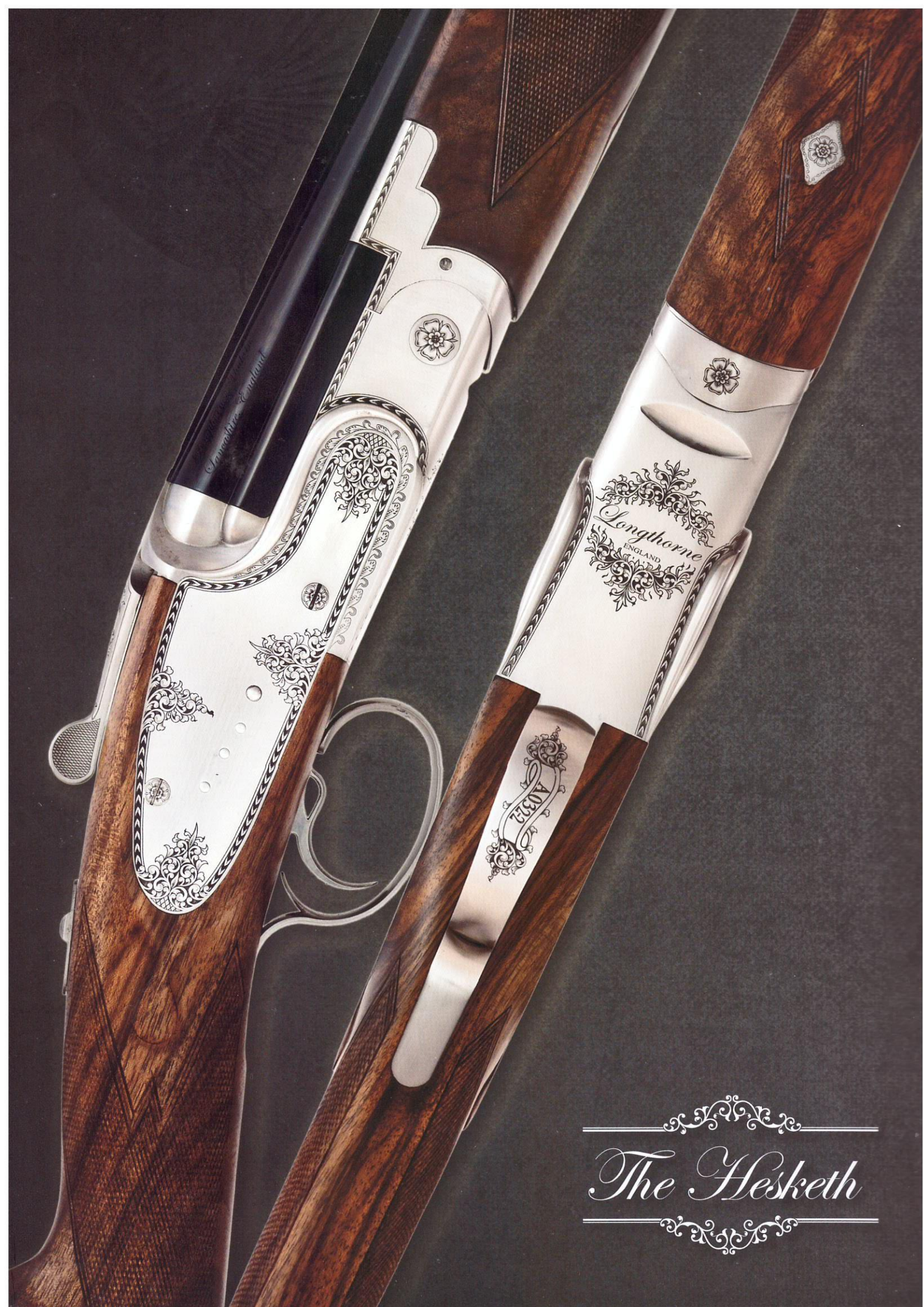
Our theories aren't new, in fact the renowned engineer Sir Joseph Whitworth (of Whitworth thread fame) recognised the benefits and patented barrels manufactured from a single piece of steel in 1857.

However, the manufacturing methods were expensive in comparison to the cheap labour costs of the day and cumbersome compared to today's technology, so the fabricated barrel-making method prevailed in Whitworth's time.

We take pride in our processes and products, actively encouraging shooters to try our guns for themselves. So we would be delighted to arrange for you to put our products through their paces.

Interested in finding out more? Visit the Press section of our website for customer reviews.





Langthorne  
ENGLAND

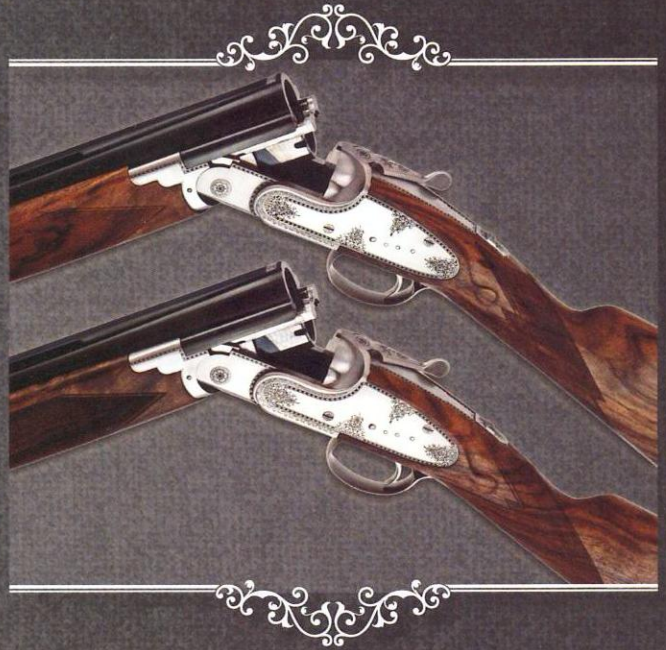
Langthorne  
ENGLAND

A0322

The Hesketh

# The Hesketh

The Hesketh is our signature gun, named after the small Lancashire town of its origins, and it features a conservative engraving style.



## Standard specifications:

### Calibre/Chamber

12g (3")  
16g (2.3/4")  
20g (3")  
28g (2.3/4")  
.410 (3")

### Barrels:

26" to 34" as required

### Chokes:

Fixed and as required

### Action:

Low profile true sidelock

### Rib:

Game or sporting

### Stock:

Straight or semi-pistol grip  
Dimensions as required  
Can be left-handed

### Weight examples:

28" barrels circa 6lb 12oz (3.06kg)  
30" barrels circa 7lb (3.18kg)

### Trigger:

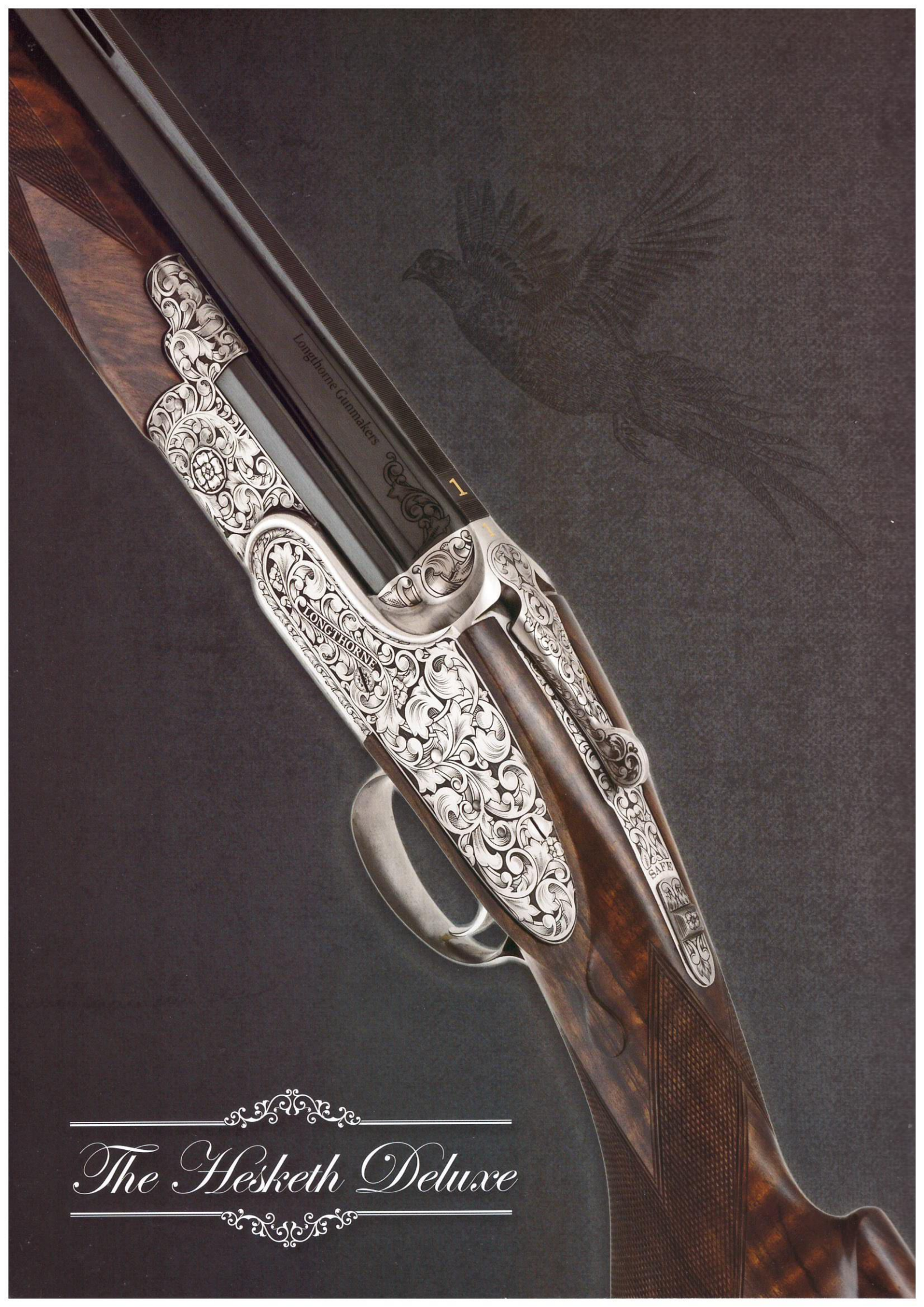
Single trigger

### Additional information:

Can be proofed for steel

Comes with English bridle leather gun slip

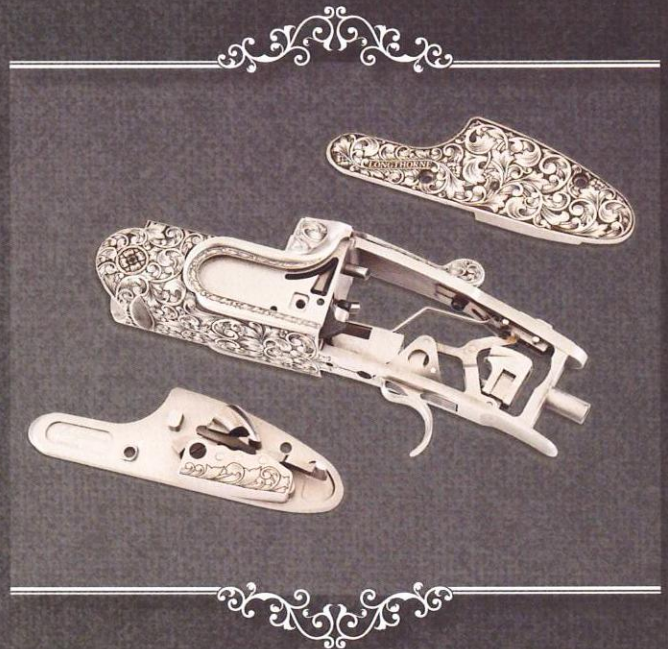
Can be configured as a true left-hand gun



*The Hesketh Deluxe*

# The Hesketh Deluxe

This 12-bore true sidelock over and under shotgun is available as a game gun (DLX-L1-GM) or sporter (DLX-L1-SP).



## Standard specifications:

### Calibre/Chamber

12g (3")  
16g (2.3/4")  
20g (3")  
28g (2.3/4")  
.410 (3")

### Barrels:

26" to 34" as required

### Chokes:

Fixed and as required

### Action:

Low profile true sidelock

### Rib:

Game or sporting

### Stock:

Semi-pistol grip or straight hand bespoke  
Turkish walnut stock  
Can be left-handed

### Weight:

28" barrels circa 6lb 12oz (3.06kg)  
30" barrels circa 7lb (3.18kg)

### Trigger:

Single trigger

### Engraving:

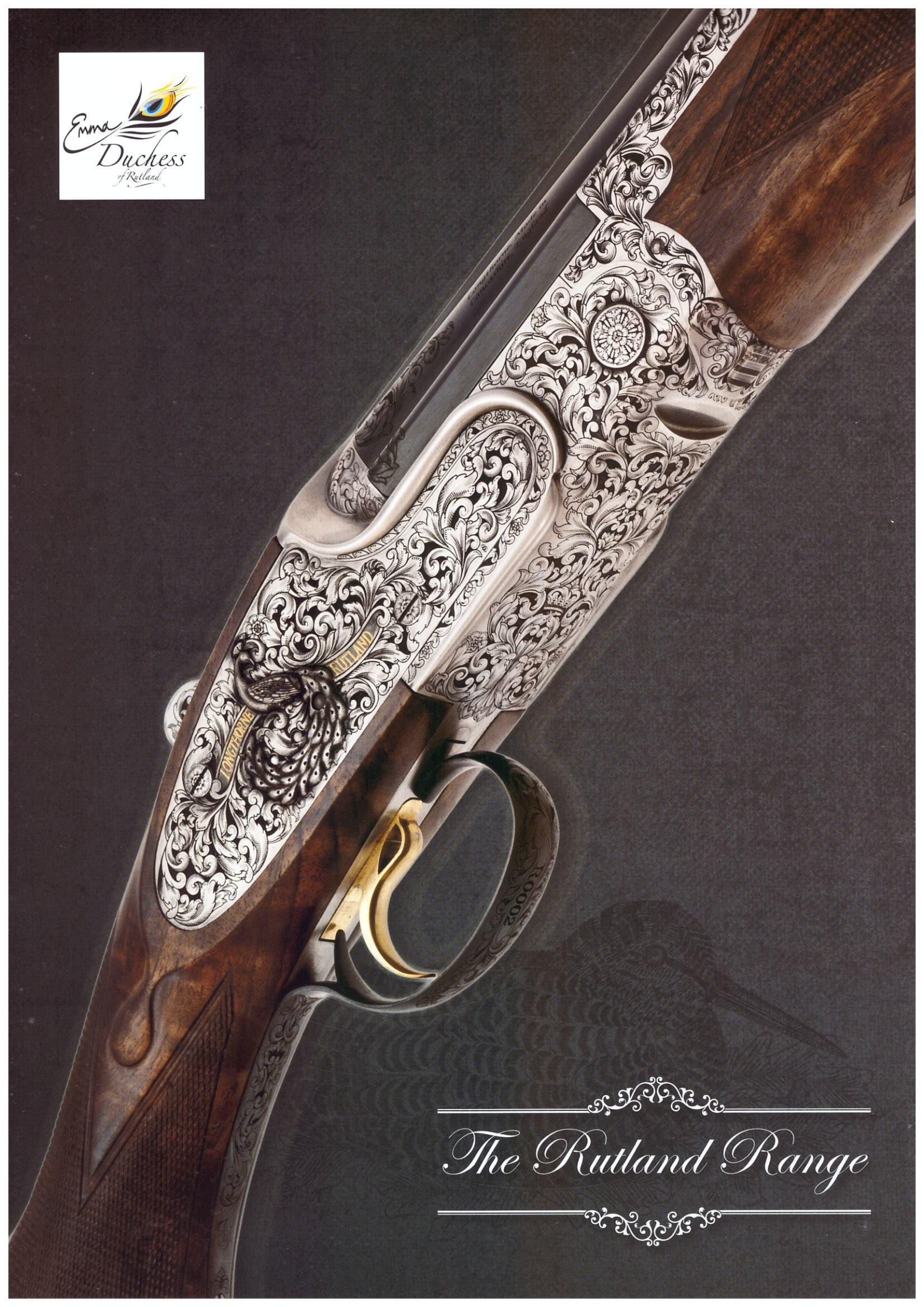
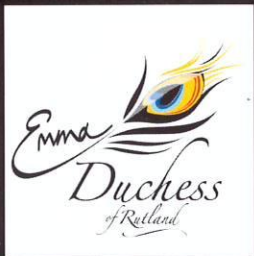
Deep scroll engraving

### Additional information:

Can be proofed for steel

Comes with English bridle leather gun slip

Can be configured as a true  
right or left-hand gun



*The Rutland Range*

# The Rutland Range

The Rutland Range is the result of our partnership with Emma, 11th Duchess of Rutland.

The Duchess is passionate about British traditions, heritage, craftsmanship, creativity and innovation and we're proud to be her collaborators on this exciting project.

Belvoir Castle has been the ancestral home of The Dukes of Rutland for over 1,000 years and has a long association with shooting, boasting an extensive armoury within its walls.

The Belvoir Estate offers the finest partridge and pheasant shooting in breathtakingly beautiful surroundings. The highest quality driven game shooting, combined with the heritage and magnitude of the Castle and Estate, makes for an unforgettable experience.

It seems only fitting that an exemplar of the English shooting scene has its own gun.



## Standard specifications:

### Calibre/Chamber

12g (3")  
20g (3"),

### Barrels:

26" to 34" as required

### Chokes:

Fixed and as required

### Action:

Low profile true sidelock

### Rib:

Game or sporting

### Stock:

Semi-pistol grip or straight hand bespoke  
Turkish walnut stock  
Can be left-handed

### Weight:

28" barrels circa 6lb 12 oz (3.06kg)  
30" barrels circa 7lb (3.18kg)

### Trigger:

Single trigger

### Engraving:

Deep scroll engraving

### Additional information:

Can be proofed for steel

Presented in exemplary quality leather gun case

Can be configured as a true right or left-hand gun



This publicity material is not applicable in USA or Canada. These specification details do not apply to any particular product which is supplied or offered for sale. The manufacturer reserve the right to vary their specification, with or without notice at such times in such manner as they think fit. Major as well as minor changes may be involved. Every effort however, is made to ensure the accuracy of the particulars contained in this brochure. Consult the Dealer with whom your order is placed for details of the specification of any particular product. This publication shall not constitute in any circumstances whatsoever an offer by the Company to any person. All sales are made by the Distributor or Dealer concerned subject to and with the benefit of the standard Conditions of Sale and Warranty given by the Distributor or Dealer, copies of which may be obtained from them on request.

Moss Lane, Hesketh Bank, Preston, Lancashire PR4 6AE, England  
T: +44 (0) 1772 811215 | E: [admin@longthorneguns.com](mailto:admin@longthorneguns.com) | W: [www.longthorneguns.com](http://www.longthorneguns.com)



Rose & Scroll with personalised vignettes  
Australian theme



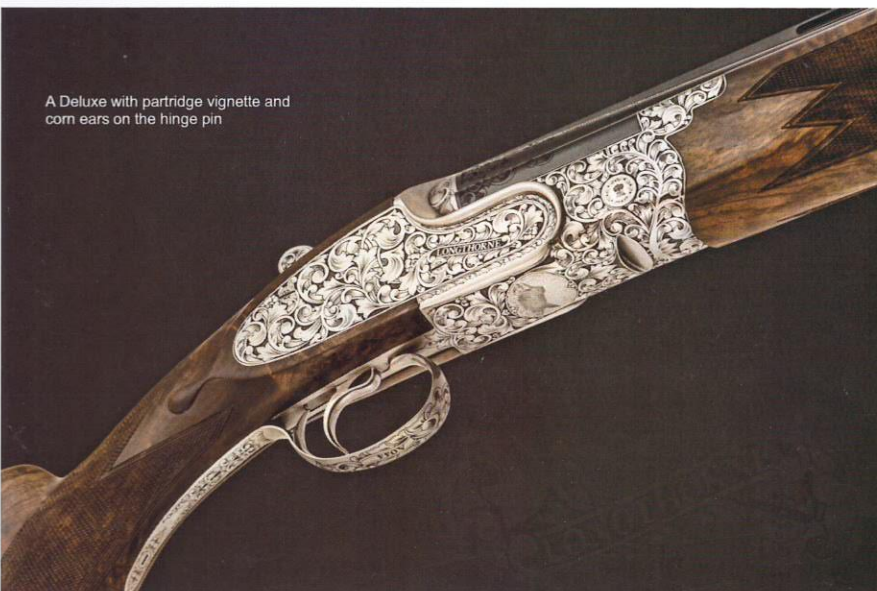
An example of a game scene vignette by Chloe Longthorne Stewart



Celtic Design

# Longthorne Custom Guns

A Deluxe with partridge vignette and  
corn ears on the hinge pin



- ✓ 100% ENGLISH
- ✓ LOW PROFILE - TRUE SIDELOCK
- ✓ LONDON STEEL PROOFED - UP TO FULL CHOKE
- ✓ LIGHTWEIGHT (12G-30" BARREL CIRCA 7LB)
- ✓ NEGLIGIBLE RECOIL/MUZZLE FLIP
- ✓ BESPOKE
- ✓ ADVANCED BARREL TECHNOLOGY
- ✓ AVAILABLE IN  
12G(3"), 16G(2.3/4") 20G(3") 28G(2.3/4").410(3")



Deluxe Hi Rib Model

Rose & Scroll with personalised vignettes of clients home on each sidelock and, his dog on underside



Ribless Model



Sketch of clients dog by Chloe Longthorne Stewart